

# SPECIAL EVENTS

at President Lincoln's Cottage



National Monument and National Historic Landmark

# ABOUT PRESIDENT LINCOLN'S COTTAGE



Built in 1842 for banker George Washington Riggs, this Gothic Revival-style mansion became a sanctuary for sitting U.S. Presidents in the 19th century. While in residence, Abraham Lincoln made momentous decisions that defined his presidency, such as the decision to **create and issue the Emancipation Proclamation.**

Ideal for both intimate and larger events, this inspiring home features handsome woodwork, marble fireplaces, an inviting veranda, and expansive lawns bordered by impressive trees, including a large Osage Orange and Magnolia.

Proceeds from your event help preserve this National Monument.



All our packages include ample free parking, handicap accessibility, and on-site museum staff for cocktail hour. Rental blocks include setup and breakdown time — in most cases resulting in two hours of setup and one hour of breakdown. The Robert H. Smith Visitor Education Center and exhibits will remain open for guests to enjoy at their leisure.

# THE EXCLUSIVE EXPERIENCE



This option will provide your group with *EXCLUSIVE* use of the historic site for the day. Have meetings/sessions in the Cottage, lunch on the grounds, and ensure your vendors have plenty of time to set up for your special event.

Guests may enjoy cocktails on both floors of President Lincoln's Cottage. Following cocktails, there will be an evening reception on one of our tented lawns. The Robert H. Smith Visitor Education Center and its exhibit galleries will also be open for the duration of the event.

*Tents to be reserved separately through our exclusive tenting provider.*

Capacity: North Lawn 120 Guests / Visitor Center Lawn 350 Guests  
Full Day (16 Hour) Rental: \$20,000  
Government/Non-Profit Rate: \$15,000

# COTTAGE COCKTAILS & LAWN



**Our most popular option!**

Guests will enjoy sipping cocktails while exploring the First Floor of this historic home or out under the starry sky on either the North or South lawn. Afterwards, your guests will then be invited to an evening of dinner and dancing under a tent on one of our lawns.

*Tents to be reserved separately through our exclusive tenting provider.*

**Capacity: North Lawn 120 Guests / Visitor Center Lawn 350 Guests**

**8-hour Rental: \$9,000**

**Government/Non-Profit Rate: \$8,000**

# FULL COTTAGE RENTAL



It may be called a “Cottage,” but this spacious Gothic Revival home is an awe-inspiring Presidential retreat with 34 rooms, high ceilings, exquisite wood paneling, and period-style lighting. This option includes both floors of President Lincoln’s Cottage and the surrounding lawns. Guests may enjoy a cocktail reception on the First Floor followed by a seated dinner on the Second Floor or vice versa.

**Capacity: 120 Guests**  
**8-hour Rental: \$10,000**  
**Government/Non-Profit Rate: \$9,000**

# COTTAGE FIRST FLOOR



**Ideal for receptions and dinners of up to 120 guests, the First Floor features the drawing room, dining room, parlor, library and adjoining outdoor spaces. The mature magnolia, magnificent landscaping, and scenic vista provide a setting of which even the discerning Mary Lincoln approved. Guests may enjoy drinks from an outdoor bar, roam the rooms of this historic house, and enjoy an enchanting dinner inside or under the stars.**

**Capacity: 120 Guests  
8-hour Rental: \$7,500  
Government/Non-Profit Rate: \$6,500**

# THE EMANCIPATION EXPERIENCE



President Lincoln developed the Emancipation Proclamation during his first summer in residence at the Cottage. Connect your event with this defining moment in history by picking the Emancipation Experience. Your guests will engage with our team to explore Lincoln's private life, presidency, and path to Emancipation. During cocktails on the First Floor, our interpretive staff will be on hand to answer questions and share stories of Lincoln's time here with guests. Dinner is served in the largest room on the second floor, where Lincoln spent much of his time drafting the Emancipation Proclamation.

Capacity: 60 Guests  
8-hour Rental: \$8,500  
Government/Non-Profit Rate: \$7,500



# THE GREAT OUTDOORS



## TENTING SOUTH LAWN EXCLUSIVE

The South Lawn of the Cottage is one of the largest green spaces of any venue in Washington, DC. Situated on a magnificent hilltop with sweeping vistas, the landscape is perfect for large, lavish events. If you are looking for a stand-out experience for your guests, this is one to make the grade. With this rental comes the exclusivity of the Cottage, Visitor Center and adjacent lawns.

*Tents to be reserved separately through our exclusive tenting provider.*

**Capacity: up to 1,500 guests**  
**10-hour Rental: \$25,000**  
**Government/Non-Profit Rate: \$22,500**



## TENTING VISITOR CENTER

For large outdoor-only events, a tent may be erected on the lawn of the Robert H. Smith Visitor Education Center. The pastoral grounds make for a charming backdrop while restrooms are conveniently located in nearby Beaux Arts -style Visitor Education Center.

*Tents to be reserved separately through our exclusive tenting provider.*

**Capacity: 350 Guests**  
**6-hour rental: \$4,000**  
**Government/Non-Profit Rate: \$3,750**



## TENTING NORTH LAWN

For small outdoor-only events, a tent may be erected on the North Lawn adjacent to the Cottage. Having Lincoln and his horse under your tent will enchant guests for the evening. Restrooms are conveniently located in nearby Beaux Arts -style Visitor Education Center.

*Tents to be reserved separately through our exclusive tenting provider.*

**Capacity: 120 Guests**  
**6-hour rental: \$3,000**  
**Government/Non-Profit Rate: \$2,750**

# ADDITIONAL SPACES



## ROBERT H. SMITH VISITOR EDUCATION CENTER

Built in 1905 as the administration building for the Solders' Home, this impressive Beaux-Arts style building features a gracious atrium, beautiful turn of the century tile floors, and hand carved oak woodwork. Ideal for standing receptions, this space includes access to the adjoining exhibit galleries, interactive community space, and museum store. Guided tours of President Lincoln's Cottage can be added for an additional fee.

**Capacity: up to 100 guests**

**6-hour Rental: \$4,500**

**Government/Non-Profit Rate: \$3,250**



## GROUP PROGRAM ROOM

Located on the lower level of our Visitor Education Center, the Group Program Room is an ideal space for comfortable meetings, classroom style workshops, working lunches and leadership retreats. The room features private restrooms, Wi-Fi, and a dual screen technology with logitech webcam capabilities for various types of presentations. The space opens to an area of mature trees and several picnic tables. A guided tour of President Lincoln's Cottage may be added for an additional fee.

**Capacity: 40 Guests**

**8-hour rental: \$2,500**

**Government/Non-Profit Rate: \$1,500**



## PROGRAM GALLERY

Located on the main floor of the Robert H. Smith Visitor Center, the Program Gallery is an ideal space for both casual meetings and corporate retreats. The room features a wall-mounted monitor with wireless microcomputer complete with internet access and built-in speakers, Wi-Fi and large windows for natural light. Whether team building or organizational planning, this room offers a creative and uplifting atmosphere. Guided tours of President Lincoln's Cottage can be added for an additional fee.

**Capacity: 24 Guests**

**6-hour rental: \$1,750**

**Government/Non-Profit Rate: \$1,000**

## ADDITIONAL SPACES



### THE BANDSTAND

This charming structure was built at the turn of the 20th century as a performance space for the Soldiers' Home band and their weekly concerts. Today, the cast iron bandstand offers a shaded outdoor area with views of our historic campus, perfect for small luncheons and social events. Most of our guests enjoy pairing this with a private Signature tour of the Cottage.

Capacity: 25 Guests  
4-hour rental: \$500  
Government/Non-Profit Rate: \$350



### PICNIC AREA

A tree-lined picnic area is nestled behind the Visitor Center, the perfect spot for basket lunches. Six spread out tables along with ample areas for blankets create a relaxing atmosphere for an enjoyable outdoor event.

2-hour reserved table rental: \$35 per table  
3-hour full area reserved: \$350

## SPECIAL OCCASIONS



### MILITARY PROMOTION

Located on the grounds of the Armed Forces Retirement Home, President Lincoln's Cottage has a history as a venue for Military Promotion Ceremonies. Whether it be a small ceremony or full reception, our spaces can accommodate the needs of your event while providing a fitting backdrop to your day.

Customized based on hours & location.  
Ask for a quote!

# TOUR OPTIONS

## **SIGNATURE TOUR**

\$12.50 per person  
(for groups of 10 or more)

Our professional staff use interactive multimedia and traditional storytelling methods to bring President Lincoln to life for visitors of all ages. The vibrant, conversational tour provides new perspectives, gives space for self-reflection, and connects Lincoln's legacy to the fight for freedom today.

## **PREMIUM TOUR**

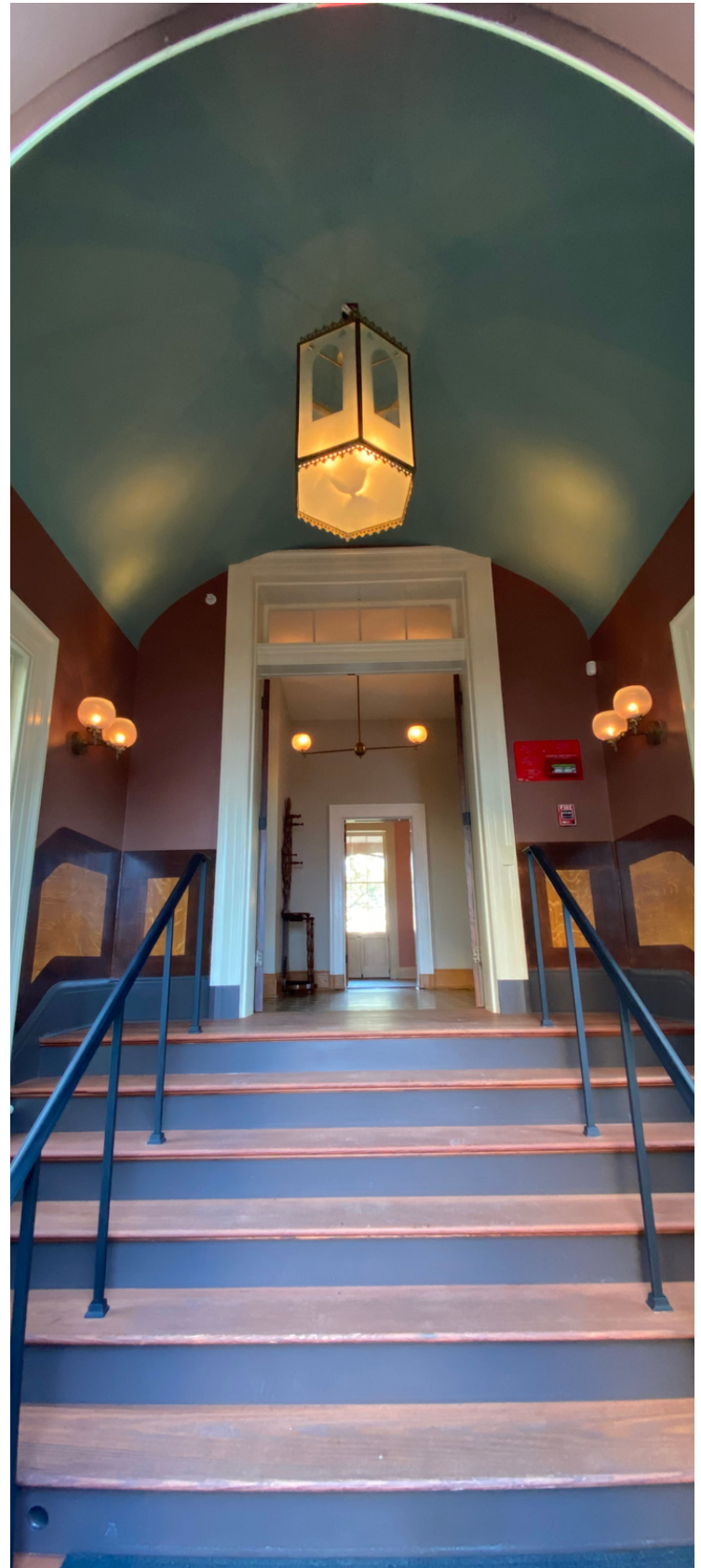
\$30 per person  
(for groups of 10 or more)

Designed for visitors seeking a private and personalized experience at President Lincoln's Cottage, the group is welcomed by a member of senior staff, followed by a signature tour with one of our museum educators. At the conclusion of the tour, guests enjoy a premium behind-the-scenes experience.

## **EXCLUSIVE TOUR**

\$2,000  
(for groups of up to 20)

The Exclusive Tour includes the Premium Tour with even more exceptional offerings. Not only will senior staff greet you, they will be with you throughout your experience. For example, *based on availability*, the Senior Preservationist may be with you to share details hidden within the Cottage. You will also be shown objects connected to Lincoln's experience at the Cottage not usually available to the public. It truly is exclusive!



# CONTACT

For questions about hosting your retreat or event  
at President Lincoln's Cottage, contact:

**[Events@lincolncottage.org](mailto:Events@lincolncottage.org)**

**202-688-3732**



**[www.lincolncottage.org](http://www.lincolncottage.org)**